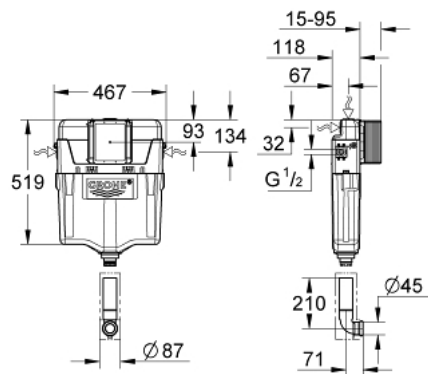
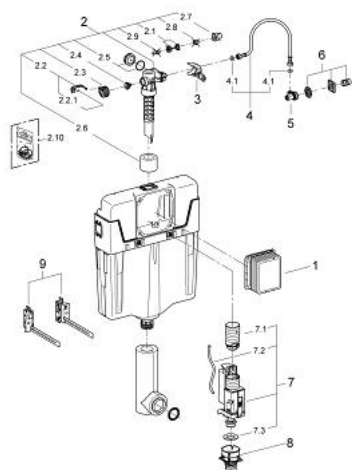


A white Grohe 23 615 000 shower mixer tap. It features a single-lever handle with a central push-button. The handle is mounted on a white rectangular base plate. The Grohe logo is visible on the front of the base plate. The tap body is white and has a red stop button at the bottom. The tap is shown against a white background.



38 900 000 SPÜLKASTEN GD 2



ERSATZTEILE, März 2010 – now

- 1: Revisionsschacht für große Abdeckplatten (Order-nr. 66783000)
- 2: Füllventil, 1/2" (Order-nr. 37095000)
- 2.1: Hebel (Order-nr. 43734000)
- 2.1.1: Dichtung (Order-nr. 4377000M)
- 2.2: VENTILKOPF (Order-nr. 43536000)
- 2.3: Membrane (Order-nr. 4375800M)
- 2.4: Schraubkappe (Order-nr. 43735000)
- 2.5: Schwimmer (Order-nr. 4379100M)
- 2.6: Dichtungssatz (Order-nr. 43722000)*
- 3: Halterung (Order-nr. 42246000)
- 4: Anschlussschlauch (Order-nr. 42233000)
- 4.1: O-Ring (Order-nr. 0319100M)
- 5: Eckventil (Order-nr. 42235000)
- 6: Wasseranschluss (Order-nr. 42234000)
- 7: 2-Mengen-Ablaufventil AV1 (Order-nr. 42320000)
- 7.1: Verlängerung für Überlaufrohr (Order-nr. 42313000)
- 7.2: Pneumatikschlauch (Order-nr. 42319000)
- 7.3: Dichtung (Order-nr. 42310000)
- 8: Ventilsitz für GD2 (Order-nr. 42315000)
- 9: Wandbefestigung (Order-nr. 4268400M)

* Optional accessories